



# CTIconnect's field-tested infrastructure and accessories brand

Seamless  
Ordering  
Process

Customizable  
for your  
needs

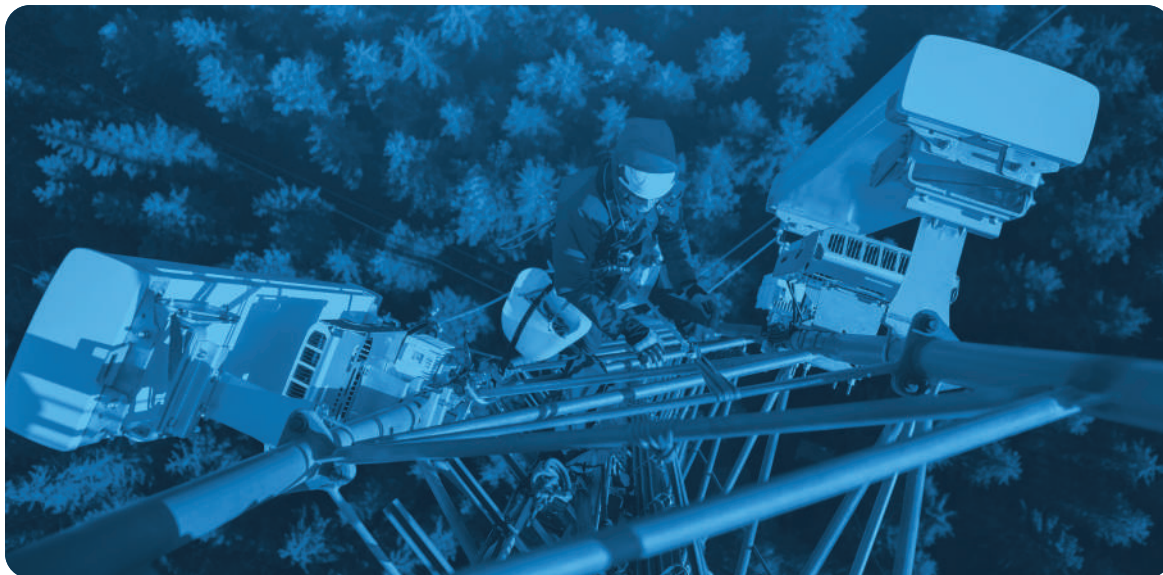
Meticulously assembled  
and installed by our  
skilled technicians

Engineered  
for your  
success





# Trusted service. Solid solutions.



We are CTIconnect.

We act as an extension of your organization to provide the technical expertise, hardware and services that help grow your business and crush your goals. In addition to decades of deep industry knowledge, we learn your operation in and out so we can tailor solutions for your specific needs.

This dedication extends to our in-house brand of accessories, Apex9. From enclosures to cables, Apex9 products are readily available for frictionless ordering and quick turnaround.

But we don't just sell the next box — we trade in trust. Because your vision is our mission. We'll work diligently to anticipate your needs, customize your solutions and support your success.

As we build bridges to a world where reliable connectivity rules, we've got your network needs covered.

**CTIconnect. Committed to Connectivity.**



## CTI-PTP-STAGE

### Pre-Deployment Staging

We're here to help you install and configure wired and wireless networks properly from the start, minimizing deployment time and increasing site productivity and on-air revenue generation.

#### Includes:

Install and verify license key Download and install latest firmware version; Program microwave equipment per PCN coordination; Bench test/24hr "burn in" microwave link(s) to ensure proper RF/network connectivity and no DOA equipment; Label the radios with the site names and IP addresses per the customer; Provide detailed as-built drawings and installation reports; Repackage and/or kit radio(s) for shipping.



## CTI-ONSITE-PS

### Onsite Engineering Support

We'll help you install, configure and validate wired and wireless networks properly from the start, cutting down on wasted deployment time, optimizing site productivity and increasing on-air revenue generation.

#### Includes:

Site survey assistance for PTP/PMP/mesh networks; Onsite project management/first turn-up services; Support/supervision for PMP/PTP/mesh deployments.



## CTI-KIT-PS

### Professional Kitting for Equipment & Logistics

Our logistical site kitting solutions allow for the shipment of site components to arrive in a sealed, self-contained and labeled crate to fully reduce the risk of missing parts and pieces from the jobsite.

#### Includes:

Custom setups for Apex9 enclosures with designated equipment pre-installed, powered up/off and configured so the enclosure and contents are delivered to the site complete; Custom as-built documentation, which includes drawings and labels of the equipment and its location inside the enclosure for site audit and receivable documentation; QR code equipment management coming soon.



## CTI-ENCLOSURE-KIT

### Enclosure Solutions

Our fully customizable enclosure solutions are meticulously assembled in our warehouse by skilled technicians to ensure quality — tailored to meet your specific project needs and specifications.

#### Includes:

Streamlined installation process for fast and easy setup; Skilled technician assembly in our warehouse for quality assurance; High-quality materials to protect the equipment and ensure durability; Versatile design to seamlessly integrate into any environment; Easy ordering and frictionless experience; Dedicated expert support through the entire process.



## OUTDOOR ENCLOSURES & ACCESSORIES



### Bobcat

The sturdy Apex9 Bobcat gets the job done. This outdoor-rated wall/pole mount cabinet has a 132lb. load capacity, despite its compact size.

#### Apex9 – 6RU Wall/Pole Mount Cabinet

- 23.6"W x 17.7"D x 10.5"H
- Outdoor IP55 Rated
- Galvanized Steel
- Beige
- Locking Front Door
- Rain Hood
- Load Capacity 132lb
- 2x 110v Top Mounted Fans w/ Temp. Controller
- 3ft Power Cord US Plug
- Air Filter
- Pole Mount Kit Included

### Lynx

The streamlined Apex9 Lynx is an outdoor-rated wall/pole mount cabinet primarily used for wireless. Easily adaptable, the Lynx can be customized for your exact needs.

#### Apex9 – 12RU Wall/Pole Mount Cabinet

- 23.6"W x 23.6"D x 21"H
- Outdoor IP55 Rated
- Galvanized Steel
- Beige
- Locking Front Door
- Rain Hood
- Load Capacity 132lb
- 2x 110v Top Mounted Fans w/ Temp. Controller
- 3ft Power Cord US Plug
- Air Filter
- Pole Mount Kit Included



### Snow Leopard

The Snow Leopard version of the Apex9 12RU cabinet comes with a white exterior. Also used primarily for wireless, this outdoor-rated wall/pole mount cabinet is fully customizable.

#### Apex9 – 12RU Wall/Pole Mount Cabinet

- 23.6"W x 23.6"D x 42.25"H
- (12.5in battery space)
- Outdoor IP55 Rated
- Aluminum
- Beige
- Locking Front Door
- Rain Hood
- Vented
- Side Cable Entry
- 2x 110v Top Mounted Fans w/ Temp. Controller
- 3ft Power Cord US Plug
- Air Filter

## OUTDOOR ENCLOSURES & ACCESSORIES



### Puma

Strong and steady, the Apex9 Puma is a floor-mount, outdoor-rated cabinet made of galvanized steel. Its 3-point locking front and rear doors and 4x vertical rails are built to endure.

#### Apex9 – 18RU Floor Mount Cabinet

- 25.6"W x 25.6"D x 31.5"H
- Outdoor IP55 Rated
- Galvanized Steel
- Beige
- 3-Point Locking Front and Rear Door
- 4x Vertical Rails (18U) w/ Cable Rings
- 4x 110v Top Mounted Fans w/ Temp. Controller
- 6ft Power Cord US Plug
- 6in Plinth

### Panther

The performance-ready Apex9 Panther is a floor-mount, outdoor-rated cabinet made of galvanized steel. Its 3-point locking front and rear doors and 4x vertical rails go the distance.

#### Apex9 – 27RU Floor Mount Cabinet

- 25.6"W x 25.6"D x 47.25"H
- Outdoor IP55 Rated
- Galvanized Steel
- Beige
- 3-Point Locking Front and Rear Door
- 4x Vertical Rails (27U) w/ Cable Rings
- 4x 110v Top Mounted Fans w/ Temp. Controller
- 6ft Power Cord US Plug
- 6in Plinth



### Cheetah

The Apex9 Cheetah is one cool customer. This outdoor-rated, floor mount, galvanized steel cabinet has an 800W front-door mounted A/C with 110v power supply.

#### Apex9 – 24RU Floor Mount Cabinet

- 29.5"W x 29.5"D x 42"H
- Front Door Mounted 800W A/C w/ 110v Power Supply and Heater
- Outdoor IP55 Rated
- Galvanized Steel
- Double Wall 1.8in EPS Foam
- Beige
- 3-Point Locking Front and Rear Door
- 4x Vertical Rails (19in RM)
- 6ft Power Cord US Plug
- 6in Plinth
- 2x DC 48v LED light
- Door Alarm





## OUTDOOR ENCLOSURES & ACCESSORIES



### Jaguar

Incredibly capable, the solid Apex9 Jaguar is an outdoor-rated, floor mount, galvanized steel double-walled cabinet with an 800W front-door mounted A/C.

#### Apex9 – 32RU Floor Mount Cabinet,

- 29.5"W x 29.5"D x 56"H
- Front Door Mounted 1500W A/C w/ 110v Power Supply and Heater
- Outdoor IP55 Rated
- Galvanized Steel
- Double Wall 1.8in EPS Foam
- Beige
- 3-Point Locking Front and Rear Door
- 4x Vertical Rails (19in RM)
- 6ft Power Cord US Plug
- 6in Plinth
- 2x DC 48v LED light
- Door Alarm

### Lion

As king of all that he surveys, the outdoor-rated Apex9 Lion rules with 13.46in battery space, 1500W A/C, 2x DC 48v LED light and a door alarm.

#### Apex9 – 24RU Floor Mount Cabinet

- 29.52"W x 31.5"D x 60.9"H with 13.46 battery space
- Front Door Mounted 1500W A/C w/ 110v Power Supply and 1000W Heater
- Outdoor IP55 Rated
- Aluminum
- Single Wall Structure w/ 20mm heat isolation foam
- Beige
- 3-Point Locking Front and Rear Door
- 4x Vertical Rails (19in RM)
- 6ft Power Cord US Plug
- 6in Plinth
- 2x DC 48v LED light
- Door Alarm
- Side Load Box pre-mount holes



### Tiger

The biggest of the Apex9 family, the outdoor-rated Tiger has it all: 2x13.6in battery space, 1500W A/C, 3-point locking front and rear doors and 4x vertical rails.

#### Apex9 – 24RU Floor Mount Cabinet

- 29.52"W x 31.5"D x 82.68"H with 2x13.6in battery space
- Front Door Mounted 1500W A/C w/ 110v Power Supply and 1000W Heater
- Outdoor IP55 Rated
- Aluminum
- Single Wall Structure w/ 20mm heat isolation foam
- Beige
- 3-Point Locking Front and Rear Door
- 4x Vertical Rails (19in RM)
- 6ft Power Cord US Plug
- 6in Plinth
- 2x DC 48v LED light
- Door Alarm
- Side Load Box pre-mount holes

## OUTDOOR ENCLOSURES & ACCESSORIES



### APX-SLDBX

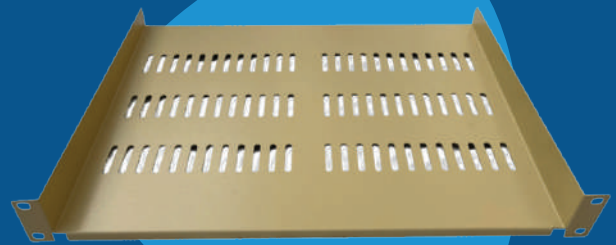
#### Apex9 Side Load Box

- 26"H x 22"W x 11" D
- Back Mounting Panel
- For Outdoor Enclosure
- IP55 Rated
- Beige

### APX-RACSH-19

#### Apex9 1U Rack Mount Shelf

- 19"W x 14"D x 1.75"H
- For Wall/Pole Mount Cabinet
- Beige



### APX-BATSH-19

#### Apex9 2U Battery Shelf

- 19"W x 14"D x 3.5"H
- Depth Adjustable
- Beige

## OUTDOOR LOAD CENTER

Two duplex receptacles on separate 20amp circuits.  
Two 240v 20amp circuits for rectifiers.

#### CTI-LOAD — Outdoor Load Center

- Weatherproof enclosure-NEMA 3R
- 14.76"W x 4.53"D x 18.94"H
- 21.14 lbs.
- Product Series Square DQO
- Number of Spaces:  
12 – Max: 24 Single Pole
- 120/240v
- Lockable
- Single Phase
- 100amp Main Breaker
- Neutral Bar



## CUSTOM CABLES & ACCESSORIES



### APX9-CAT5-2029

Apex9 Premium Dry Gel Shielded Category 5e Cable 4 Pair, 24 AWG Solid Bare Copper Conductors, UV Resistant PE Jacket/Outdoor 1000ft Black Pull Box



### APX-PWRCBL-12-2C-S-1000

Apex9 DC Power Cable 12AWG 2 Conductor Shielded 1000ft



### APX-FIBTRK-SM-12STD-LC-LC

Apex9 Fiber Trunk, Single Mode, 12 Strand, LC UPC-LC UPC, Duplex, Micro Armored, 12in Breakout Bottom, 12in Breakout Top



### APX-Linecord

Apex9 Linecord for Cambium Power Supply 3ft



### APX-SFP-IND-10G

Apex9 10GBASE-LR SFP+ Industrial Transceiver Single Mode 1310nm 10km



### APX-SNH-158

Apex9 Snap In Hangers for 1-5/8in, Pack of 10



### APX-BC-158

Apex9 Universal Barrel Cushion, 14-36mm for 2-5/8in Hanger, Pack of 10



### APX-SSA-34

Apex9 Stand-off Adapter for 3/4in Holes for Snap-in, Pack of 10



### APX-AA-34

Apex9 Angle Adapter, 3/4in Holes for Snap-in, Pack of 10



### APX-HC-23

Apex9 Stainless Steel Hose Clamp 2-3in, Pack of 10



### APX-VR

Apex9 Bulk Velcro 1/2-75in Roll, Black

**Readily available for  
frictionless ordering  
and quick delivery**





## CUSTOM CABLES & ACCESSORIES



### APX9-EZ-RJ45-SH-25

Apex9 "Easy Feed" RJ45 CAT5E Shielded Connector, Straight Feed-Through, Fits insulation OD 0.93mm ~ 1.04mm & cable OD under 6.5mm - 25/Bag



### APX9-EZ-C6RJ45-SH-25

Apex9 "Easy Feed" RJ45 CAT6 Shielded Connector, Straight Feed-Through, Fits insulation OD 0.93mm ~ 1.04mm & cable OD under 6.5mm - 25/Bag



### APX-WG-85MM

Apex9 Cat5e Weather Proof Cable Gland, LTCG



### APX-RJ45-CT

Apex9 RJ45 Crimper Open-Pass Modular Plug



### APX-RMFDU-CS-1U

Apex9 Fiber Distribution Unit, 1U Rack Mount with Slide Out Fiber Patch Panel, 3 Panels, 72 Strand Max with Cable Routing Spools Black, 1.75"H x 19"W x 12.5"D



### APX-FAP-SM-6LC

Apex9 Fiber Adapter Panel, 6 LC Ceramic Blue Adapters, Single Mode



### APX-FAP-B

Apex9 Fiber Adapter Panel, Blank, No Connections



### APX-WB-W

Apex9 Coax Wall Bushing w/Knockout Feed Thru White 100BAG



### APX-WB-B

Apex9 Coax Wall Bushing w/Knockout Feed Thru Black 100BAG



### APX-MT-10F

Apex9 Mastic Tape 1 1/2"W, SureSeal Compound 10ft Roll



## POWER, GROUNDING & SURGE PROTECTION



### APX-SP-RJ45E-48V

Apex9 Ethernet Surge Protector, 48V- IP 65



### APX-BB-1

450W 2400VA, 12/24/48VDC 20A Unreg Output, 120/240VAC Input, Large Steel Encl, 4x 12V50Ah AGM Batteries, Solar Ready



### APX-BB-2

600W 2400VA, 48V 20A Unreg Output, 120/240VAC Input, Large Steel Encl, 12/24/48V 8x50Ah AGM Batteries, Solar/Wind Ready



### APX-BB-1-MONITOR

Remote station monitor and control for CTI-BB-1-WEB and SNMP access. Monitor 4 Voltages 4 Currents 2 Temperatures and use 4 relays for power control



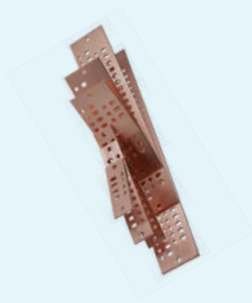
### APX-BB-1-SOLAR

340W 12V or 24V Solar Kit: Qty 4 85W Panels, Pole Mount, MPPT Controller, Cables, Supports 80W continuous



### APX-SGK-5

Apex9 Universal Copper Ground Kit, 5ft Lead (1/4in to 5/8in)



### APX-GB-2X10

Apex9 Copper Ground Bar, 2x10



### APX-HK

Apex9 Ground Bar Hardware Kit, UL

# POWER, GROUNDING & SURGE PROTECTION



## APX-GW-STD-6AWG-100

Apex9 Ground Wire, 6AWG, 7 Strand Wire with Green XHHW Jacket, 100ft



## APX-GW-STD-10AWG-500

Apex9 Ground Wire, 10AWG, 19 Strand Wire with Green XHHW Jacket, 500ft



## APX-GR

Apex9 Grounding Rod 4ft (3/8in 4ft)

Tailored  
solutions for  
your business







**Where Engineering  
meets Connectivity**

**Contact us to  
learn more**

---

(561) 295-7899  
CTISALES@CTICONNECT.COM  
CTICONNECT.COM